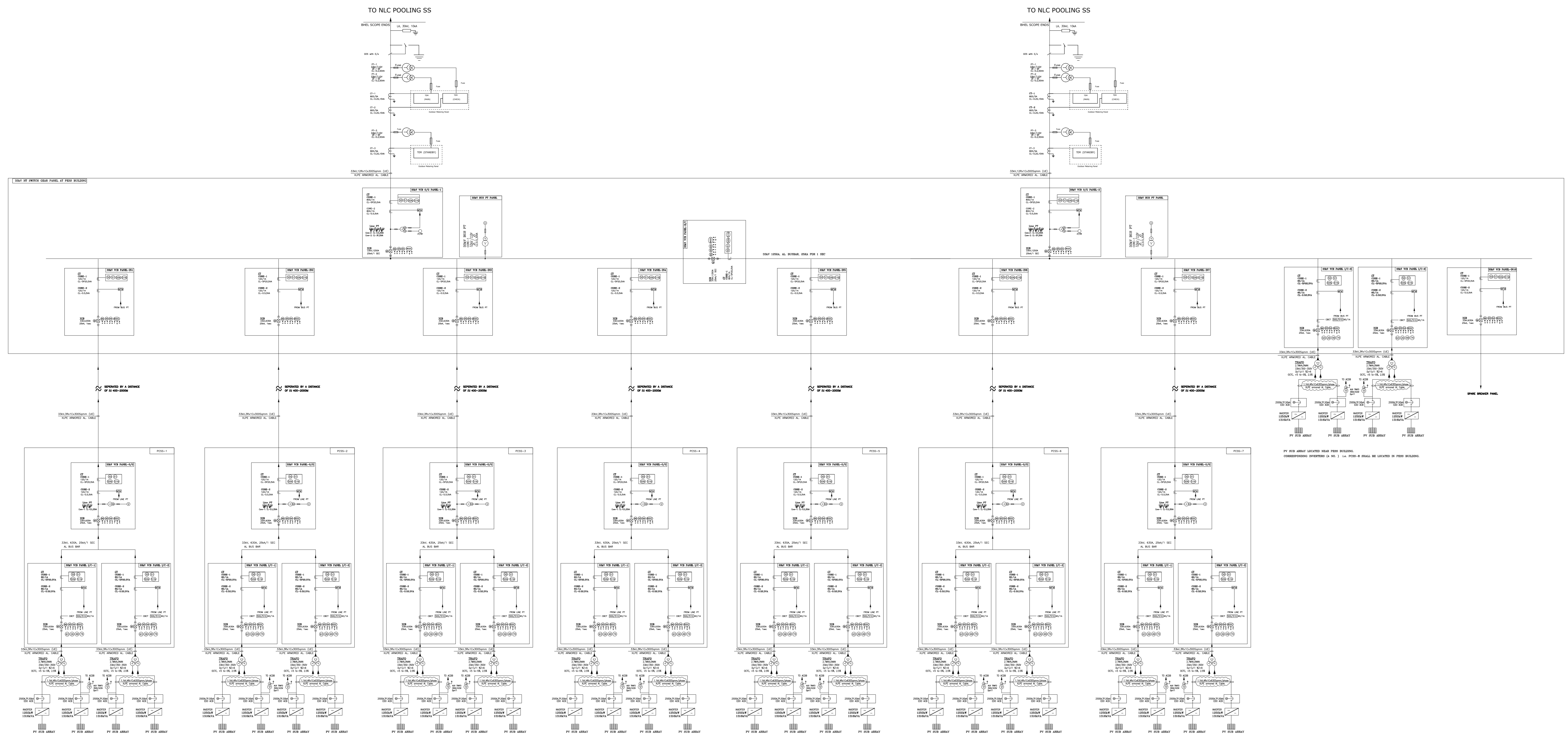


SINGLE LINE DIAGRAM OF 40 MW (AC) SOLAR BLOCK



LEGEND DETAILS

SL. NO.	SYMBOL	DESCRIPTION
1		TRANSFORMER
2		VCB 33kV, 630A 25kV/1SEC
3		LIGHTNING ARRESTER WITH COUNTER, 30kV/10kA
4		MASTER TRIP RELAY
5		TRIP CIRCUIT SUPERVISION RELAY
6		ANTI PUMPING RELAY
7		BUCHHOLZ RELAY
8		MAGNETIC OIL LEVEL GAUGE
9		WINDING TEMP INDICATOR AND OIL TEMP INDICATOR
10		PRESSURE RELIEF DEVICE
11		VCB ON
12		VCB OFF
13		SPRING CHARGE
14		AUTO TRIP
15		TRIP CIRCUIT HEALTHY
16		SERVICE POSITION
17		TEST POSITION
18		DC FAILURE
19		INST OVER CURRENT RELAY
20		IMT OVER CURRENT RELAY
21		NEUTRAL INSTANTANEOUS OVER CURRENT RELAY
22		IMT EARTH FAULT RELAY
23		MULTI FUNCTION METER
24		CURRENT TRANSFORMER
25		UNDER VOLTAGE RELAY
26		OVER VOLTAGE RELAY
27		POTENTIAL TRANSFORMER
28		FUSE
29		ISOLATOR WITH EARTH SWITCH
30		TARIFF ENERGY METER
31		DC FAILURE INDICATION
32		INVERTER, 1250kVA

NOTE: 1. CABLE SIZES ARE AS PER SIZING CALCULATION DOCUMENT AND MAY CHANGE AS PER CUSTOMER COMMENTS/APPROVAL.
2. ALL PANEL MOUNTED PTs SHALL BE FERRO RESONANT PHENOMENON FREE TYPE.

FOR TENDOR PURPOSE ONLY

	NAME OF CUSTOMER : NEYVELI LIGNITE CORPORATION LTD						
	NAME OF PROJECT : 65 MW (AC) NEYVELI SOLAR (PV) POWER PROJECT AT NEYVELI						
	BHARAT HEAVY ELECTRICALS LIMITED	DRN	NAME	SIGN.	DATE	No.OF VAR	
	ELECTRONICS DIVISION, BANGALORE	CKD	NVR		JUL'16		
		APPD	MS		JUL'16		
DEPT. SCPV CODE 439	FOR UNSPECIFIED-TOLERANCES REFER ED 0230499		SCALE NTS	WEIGHT(Kg) 1 : 1	REF. TO ASSY. DRG.	ITEM NO.	No.OF ITEM
TITLE SINGLE LINE DIAGRAM OF SOLAR POWER PLANT (AC)					DRAWING NO. EDN-03		REV. 02
SHEET NO. 01				NO. OF SHEETS 02			

REV.	DATE	ALTERED	NVR	REV.	DATE	ALTERED	NVR	REV.	DATE	ALTERED	NVR	REV.	DATE	ALTERED	NVR	REV.	DATE	ALTERED	NVR		
01	04.08.16	CHECKED	SLR	02	07.09.16	CHECKED	SLR														
		APPROVED	MS			APPROVED	MS														
		SLD revised as per the NLC comments dtd 22.07.2016.				SLD revised as per the MOM dtd 20.08.2016 at NLC and MOM dtd 03.09.2016 at BHEL EDN.															

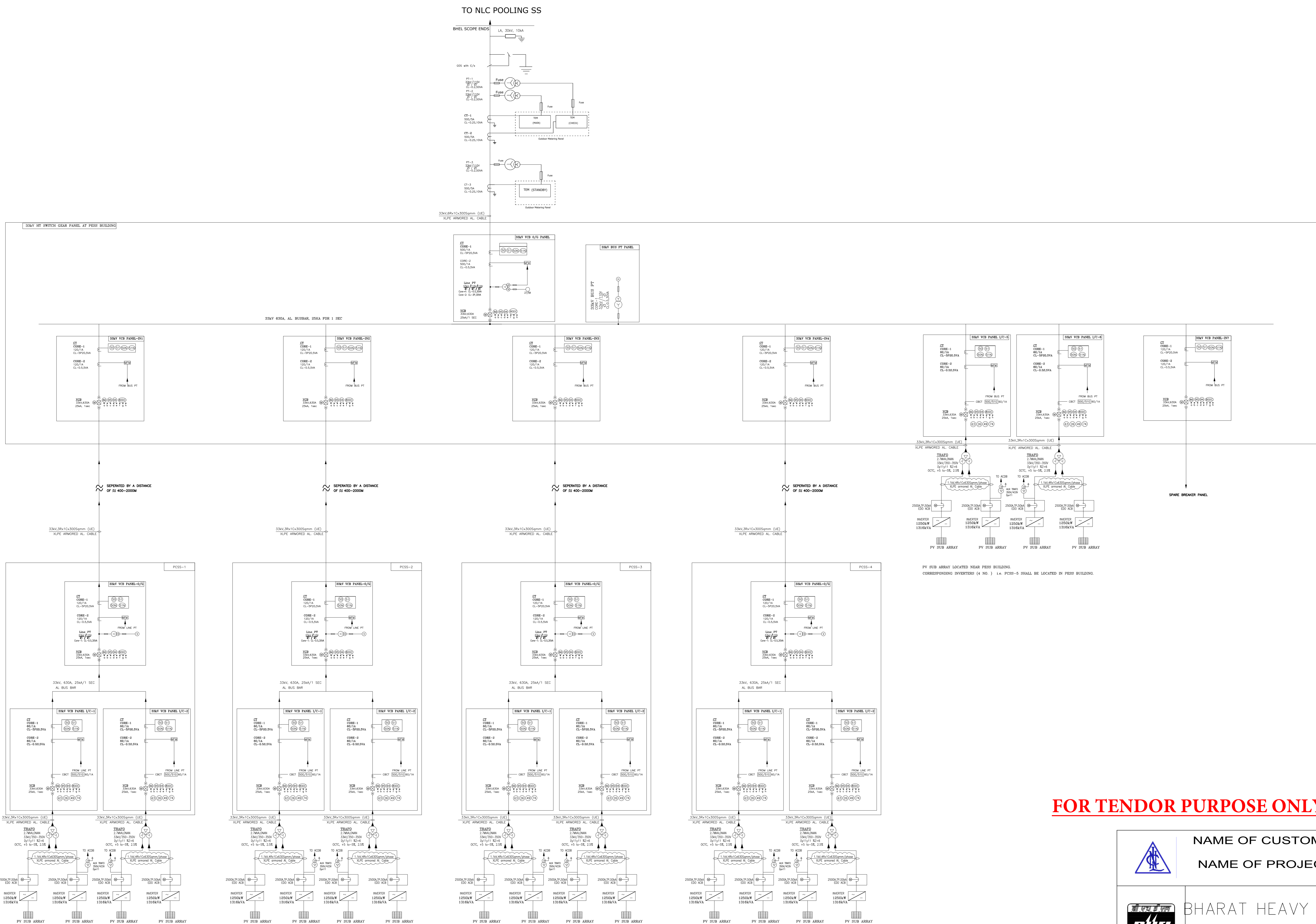
COPYRIGHT AND CONFIDENTIAL
The information on this document is the property of Bharat Heavy Electricals Limited. It must not be used directly or indirectly in anyway detrimental to the interest of the Company

REF. DRG.NO.

SIGN & DATE

INVENTORY NO.

SINGLE LINE DIAGRAM OF 25 MW (AC) SOLAR BLOCK



LEGEND DETAILS

SL. NO.	SYMBOL	DESCRIPTION
1		TRANSFORMER
2		VCB 33kV, 6.30A 25kA/1SEC
3		LIGHTNING ARRESTER WITH COUNTER, 30kV/10kA
4		MASTER TRIP RELAY
5		TRIP CIRCUIT SUPERVISION RELAY
6		ANTI PUMPING RELAY
7		BUCHHOLZ RELAY
8		MAGNETIC OIL LEVEL GAUGE
9		WINDING TEMP INDICATOR AND OIL TEMP INDICATOR
10		PRESSURE RELIEF DEVICE
11		VCB ON
12		VCB OFF
13		SPRING CHARGE
14		AUTO TRIP
15		TRIP CIRCUIT HEALTHY
16		SERVICE POSITION
17		TEST POSITION
18		DC FAILURE
19		INST OVER CURRENT RELAY
20		IDMT OVER CURRENT RELAY
21		NEUTRAL INSTANTANEOUS OVER CURRENT RELAY
22		IDMT EARTH FAULT RELAY
23		MULTI FUNCTION METER
24		CURRENT TRANSFORMER
25		UNDER VOLTAGE RELAY
26		OVER VOLTAGE RELAY
27		POTENTIAL TRANSFORMER
28		FUSE
29		ISOLATOR WITH EARTH SWITCH
30		TARIFF ENERGY METER
31		DC FAILURE INDICATION
32		INVERTER, 1250kVA

NOTE: 1. CABLE SIZES ARE AS PER SIZING CALCULATION DOCUMENT AND MAY CHANGE AS PER CUSTOMER COMMENTS/APPROVAL.
2. ALL PANEL MOUNTED PTs SHALL BE FERRO RESONANT PHENOMENON FREE TYPE.

FOR TENDOR PURPOSE ONLY

		NAME OF CUSTOMER : NEYVELI LIGNITE CORPORATION LTD NAME OF PROJECT : 65 MW (AC) NEYVELI SOLAR (PV) POWER PROJECT AT NEYVELI				
	BHARAT HEAVY ELECTRICALS LIMITED ELECTRONICS DIVISION, BANGALORE		DRN NAME SIGN.	DATE JUL'16	No.OF VAR	
			CKD NAME SIGN.	DATE JUL'16		
			APPD NAME SIGN.	DATE JUL'16		
DEPT. SCPV CODE 439	FOR UNSPECIFIED-TOLERANCES REFER ED 0230499	SCALE NTS	WEIGHT(Kg) 1 : 1	REF. TO ASSY. DRG.	ITEM NO.	No.OF ITEM
TITLE SINGLE LINE DIAGRAM OF SOLAR POWER PLANT (AC)			DRAWING NO. EDN-03		REV. 02	
SHEET NO. 02			NO. OF SHEETS 02			

REV. 01	DATE 04.08.16	ALTERED CHECKED APPROVED	NVR SLR MS
SLD revised as per the NLC comments dtd 22.07.2016.			

REV. 02	DATE 07.09.16	ALTERED CHECKED APPROVED	NVR SLR MS
SLD revised as per the MOM dtd 20.08.2016 at NLC and MOM dtd 03.09.2016 at BHEL EDN.			

REV.	DATE	ALTERED CHECKED APPROVED	NVR SLR MS
------	------	--------------------------	------------

REV.	DATE	ALTERED CHECKED APPROVED	NVR SLR MS
------	------	--------------------------	------------

REV.	DATE	ALTERED CHECKED APPROVED	NVR SLR MS
------	------	--------------------------	------------

REV.	DATE	ALTERED CHECKED APPROVED	NVR SLR MS
------	------	--------------------------	------------

REV.	DATE	ALTERED CHECKED APPROVED	NVR SLR MS
------	------	--------------------------	------------

REV.	DATE	ALTERED CHECKED APPROVED	NVR SLR MS
------	------	--------------------------	------------